



# SHADOWSPEC UNITY™

## THE EVOLUTION OF SHADE

### BEST-IN-CLASS WARRANTY

Relax easy knowing your outdoor umbrella purchase is protected by the industries best warranty and customer support.



**Fabric  
Warranty**



**Frame  
Warranty**



**Trusted for  
over 25 years**

# SHADOWSPEC UNITY™

## MULTI CANOPY CANTILEVER UMBRELLA

### PATENT-PENDING TECHNOLOGY

#### SHADOWLIFT™



Gas-assisted, anti-gravity, easy lift. Shadowlift™ is the most advanced umbrella deployment system in the industry. Lift your world of shade with ease.

#### SHADOWGLIDE™



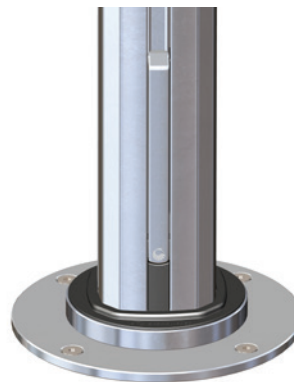
Using calculated geometry and expert engineering the sliding mechanism works in complete harmony to open or close your umbrella in 3 seconds.

#### SHADOWHUB



Our flagship umbrellas have built in LED lights in the central hub. Controlled with an optional, rechargeable, smart battery and phone app.

#### SHADOWLOCK™



Integrated into the mast of the umbrella, Shadowlock™ is a functional solution to wind-protection and 360 degree umbrella rotation.

### A New Class of Shade.

The Unity™ has been crafted with premium-grade aluminium and stainless steel to give you an umbrella that stands up and stands out. Every component has been designed and engineered to survive in the wild. There's no internal moving parts, or cables to break and best of all, no antiquated crank handles. We've perfected the art of modular shade with the Unity™. You can mount up to 4 canopies off one mast giving your endless options to enhance your outdoor space. You'll continue to be inspired by our smart, modern outdoor shade umbrella. Our needle-shifting features get better with every open and every new discovery of innovation.



## Canopy Options

### Features

- 100% Sunbrella™ Marine solution-dyed fabric
- All fabrics can be cleaned, washed and are replaceable
- UV & fade resistant
- 10 year Sunbrella™ warranty
- Mould and mildew resistant
- Weight: 314 g/m2
- Sun protection - Skin Cancer Foundation's seal of approval

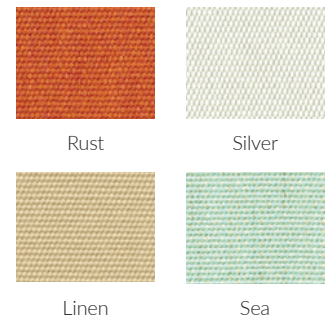


### Stock Colour Options



Full Sunbrella range is available as a custom, non-stock colour option.

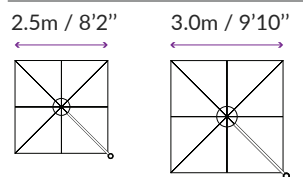
### Trend Colours Summer 19/20\*



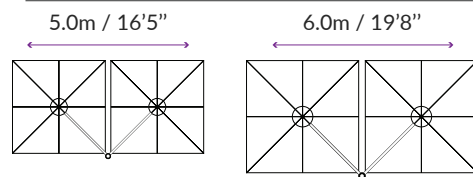
\*Trend colours are non-stock and lead times may vary for non-stock colours.

## Size & Configuration

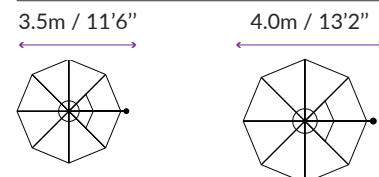
### Square Uno



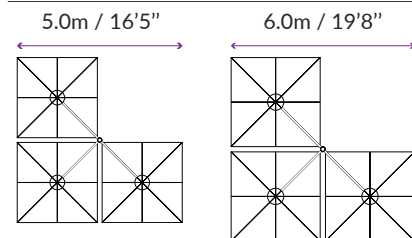
### Square Duo



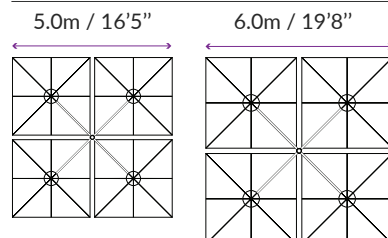
### Octagon Uno



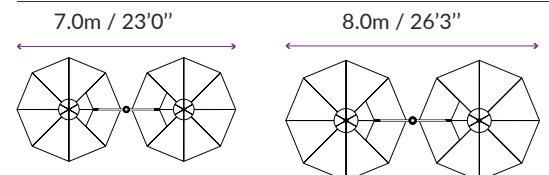
### Square Trio



### Square Quattro



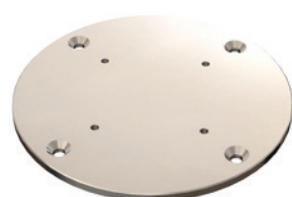
### Octagon Duo



## Mounting Options

### Surface Plate

For deck, patio and concrete mounting.



### In-Ground Anchor

For mounting with a concrete footing.



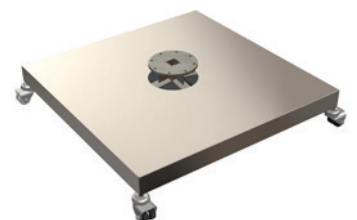
### Wall Fixings

For when ground mounting isn't possible.



### Free-standing Base

For complete customised maneuverability.



Pavers are required for ballast and are not supplied.  
Optional castor wheels shown.

Umbrella Dimensions

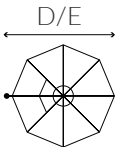
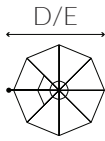
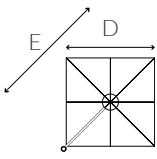
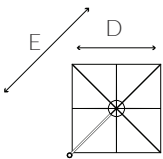
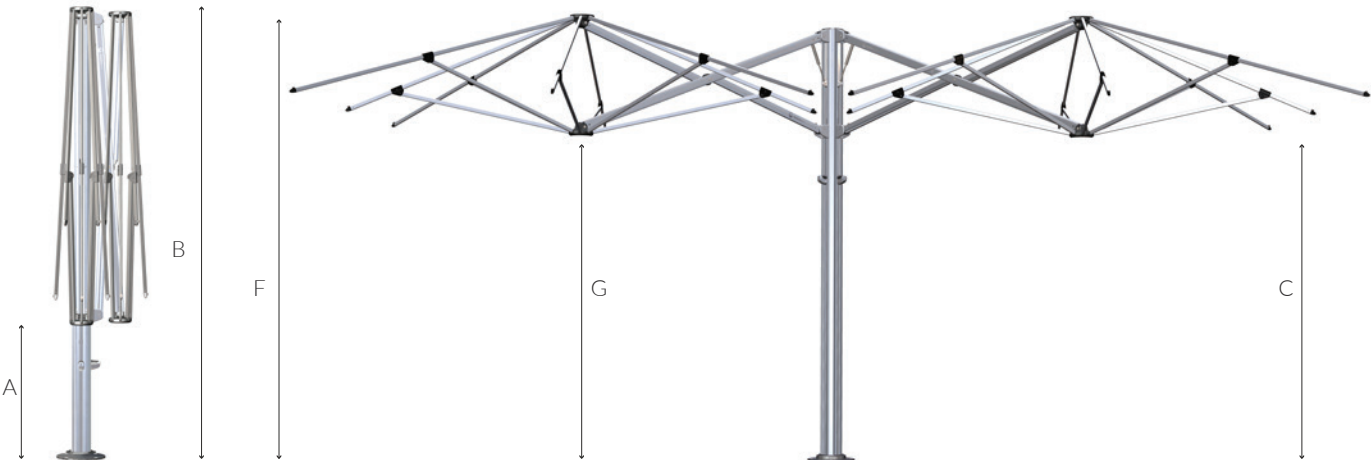


Diagram Legend

	2.5m	8'2"	3.0m	9'10"	3.5m	11'6"	4.0m	13'2"
A	Ground to central frame hub when closed*							
B	870mm	2'10"	623mm	2'1"	1096mm	3'7"	848mm	2'9"
B	2916mm	9'7"	2916mm	9'7"	2916mm	9'7"	2916mm	9'7"
C	Height of umbrella to top of mast cap*							
C	2235mm	7'4"	2232mm	7'4"	2249mm	7'5"	2190mm	7'2"
C	2235mm	7'4"	2232mm	7'4"	2249mm	7'5"	2190mm	7'2"
D	Ground to lower outer edge of canopy*							
D	2665mm	8'9"	2993mm	9'10"	3500mm	11'6"	4000mm	13'2"
D	2665mm	8'9"	2993mm	9'10"	3500mm	11'6"	4000mm	13'2"
E	Centre of mast to outside edge of canopy							
E	3639mm	11'11"	4101mm	13'6"	3473mm	11'5"	3950mm	13'0"
E	3639mm	11'11"	4101mm	13'6"	3473mm	11'5"	3950mm	13'0"
F	Diagonal from centre of mast to corner							
F	2905mm	9'6"	2830mm	9'3"	2985mm	9'10"	2908mm	9'7"
F	2905mm	9'6"	2830mm	9'3"	2985mm	9'10"	2908mm	9'7"
G	Total height to top of canopy*							
G	2163mm	7'1"	2084mm	6'10"	2239mm	7'4"	2162mm	7'1"
G	2163mm	7'1"	2084mm	6'10"	2239mm	7'4"	2162mm	7'1"

\*Portable Base installations will add 165mm to these measurements. Adding portable base wheels also will add a further 45-80mm/2-3". All sizings are +/- 2.5mm / 1/8" and subject to change without notice.



143 St Vincent Street, Nelson, NZ  
03 546 6809  
sales@tmcovers.co.nz  
www.tmcovers.co.nz

In partnership with

